

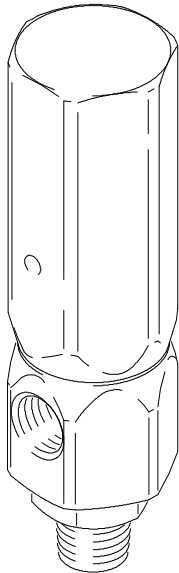
Pressure Relief Valve

308547F
EN



Read warnings and instructions.

See page 2 for the **List of Models**, valve cracking pressures, and maximum working pressures.



04380

⚠ WARNING

To reduce the risk of serious injury, including fluid injection, splashing in the eyes or on the skin, injury from moving parts, or fire and explosion, be sure to follow these precautions:

- Always relieve air and fluid pressure in the system before servicing the valve.
- Be sure that the fluid working pressure of your system is within the suggested working pressure range of the relief valve. Fluid leakage, nuisance cracking, or system component rupture may occur if the system working pressure does not fall within the suggested working pressure range.
- Do not modify, remove, or plug the pressure relief valve.
- Keep the valve in good operating condition. Clean the valve daily when using filled materials. Filled materials may obstruct the internal moving parts of the valve.
- Do not remove the Warning Label. It contains important warnings and instructions. Additional Warning Labels can be ordered at no charge from Graco.
- Ground the entire system, including the pressure relief valve, when pumping flammable liquids.

PROVEN QUALITY. LEADING TECHNOLOGY.

CE

List of Models

Pressure relief valves prevent system overpressurization. The following table states the valve cracking pressure at which the valve relieves and the suggested working pressure range for each valve.

Model, Series A	Cracking Pressure, psi (bar, MPa)	Suggested Working Pressure Range, psi (bar, MPa)
237060	750 (52, 5.2)	475-575 (33-40, 3.3-4.0)
237061	1500 (103, 10.3)	950-1150 (66-79, 6.6-7.9)
237112	2250 (155, 15.5)	1400-1800 (97-124, 9.7-12.4)
237062	3000 (207, 20.7)	1800-2300 (124-159, 12.4-15.9)
237073	3750 (259, 25.9)	2300-2900 (159-200, 15.9-20.0)
237063	4500 (310, 31.0)	2900-3600 (200-248, 20.0-24.8)
237074	6000 (414, 41.4)	3600-5000 (248-345, 24.8-34.5)
24W475	400 (27.6, 2.76)	275-350 (19-24, 1.9-2.4)

Installation

- Install valve in pump outlet with suitable fittings.
- Install a discharge line from 1/2 npt(m) relief port in bottom of valve to the supply container or a waste container.
- DO NOT connect discharge line to a pressurized line, such as the transmission line between a feed pump and the proportioning pump.

WARNING

Materials that cure when exposed to air may defeat the ability of the safety valve to relieve an over-pressure condition, resulting in burst components and serious injury

- For materials that cure when exposed to air, add a loop in the discharge line and fill with compatible oil to prevent the discharge line from plugging after relieving. See Fig. 1. Do not connect the discharge line to the supply container to prevent contamination from the oil. Also add compatible oil to cap through hole to prevent needle/seal from curing in case of fluid seepage.

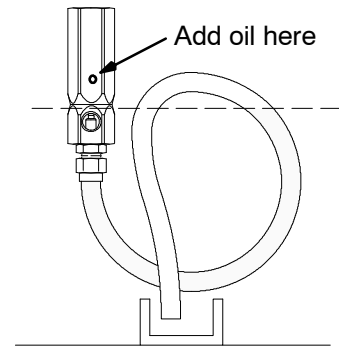


Fig. 1

04522

Typical Installation

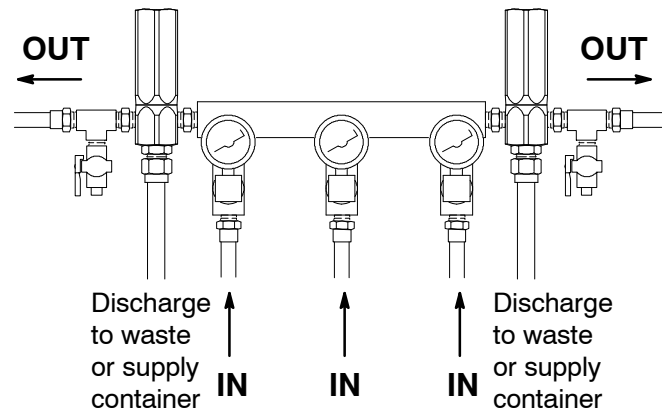
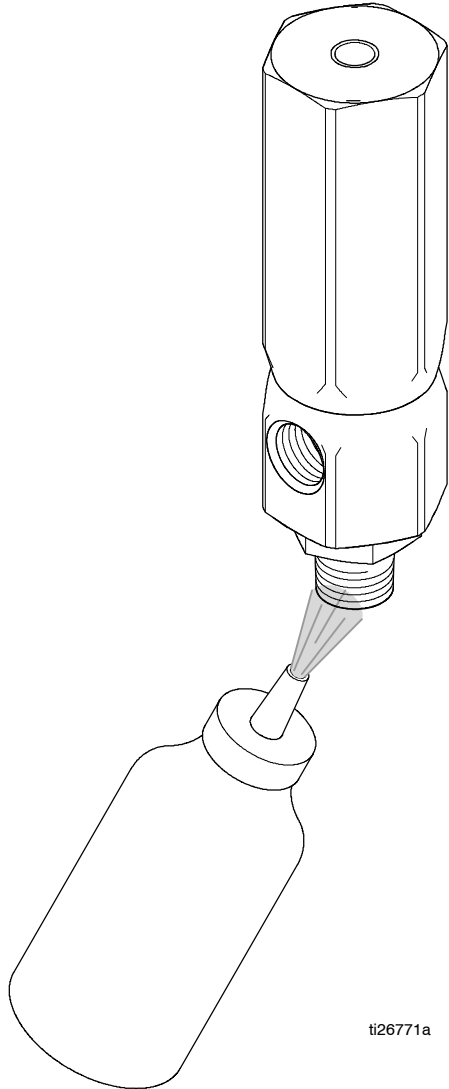


Fig. 2

04691

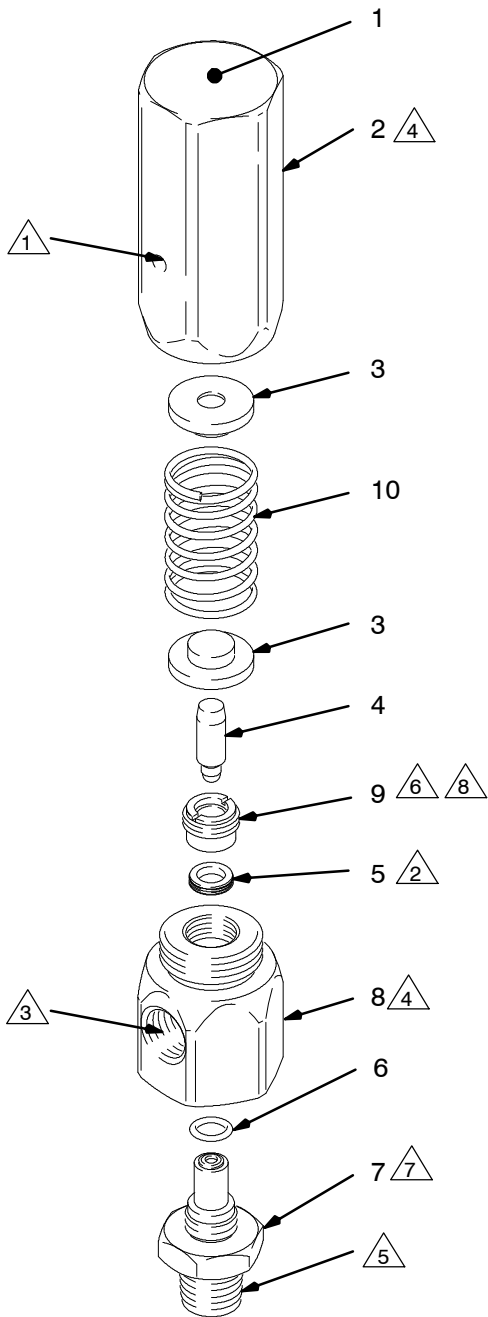
Maintenance

- When using ISO catalyst, clean fluid outlet port each time the relief valve is activated. This will prevent buildup of dried catalyst.
- Dried catalyst can prevent the valve from releasing when needed.
- Use squeeze bottle with cleaning solvent to clean out the port.



ti26771a

Parts



Ref. No.	Part No.	Description	Qty.
1	290078	LABEL, warning	1
2	---	SPRING HOUSING	1
3	189992	GUIDE, spring	2
4		NEEDLE, valve	1
	237018	(all other models)	
	24W476	(model 24W475)	
5		SEAL, spring loaded; graphite-filled PTFE	1
	111364	(all other models)	
	16N786	(model 24W475)	
6	107505	PACKING, o-ring	1
7	237019	SEAT, valve	1
8		HOUSING, valve	1
	189994	(all other models)	
	17C238	(model 24W475)	
9		RETAINER, seal	1
	189997	(all other models)	
	17C237	(model 24W475)	
10	---	SPRING	1

✓ *Keep these spare parts on hand to reduce down time.*

NOTES:

- 1 Replace seal (Ref. No. 5) if leakage is observed.
- 2 Apply lubricant. Face lips towards housing (Ref. No. 8).
- 3 1/2 npt(f) inlet and outlet
- 4 Apply lubricant. Torque to 50-60 ft-lb (68-81 N•m).
- 5 1/2 npt(m) relief port
- 6 Apply anti-sieze lubricant. Torque to 13-15 ft-lb (18-20 N•m).
- 7 Apply anti-sieze lubricant. Torque to 75-85 ft-lb (102-115 N•m).
- 8 9/16 in. drag-link socket required.

04381

Technical Data

Valve type spring-loaded needle
 Inlet and outlet port size 1/2 npt(f)
 Relief port size 1/2 npt(m)
 Wetted parts 304 stainless steel,
 graphite-filled PTFE, UHMWPE (model 24W475),
 tungsten carbide (nickel binder)
 Noise level <70 dBA

Graco Standard Warranty

Graco warrants all equipment referenced in this document which is manufactured by Graco and bearing its name to be free from defects in material and workmanship on the date of sale to the original purchaser for use. With the exception of any special, extended, or limited warranty published by Graco, Graco will, for a period of twelve months from the date of sale, repair or replace any part of the equipment determined by Graco to be defective. This warranty applies only when the equipment is installed, operated and maintained in accordance with Graco's written recommendations.

This warranty does not cover, and Graco shall not be liable for general wear and tear, or any malfunction, damage or wear caused by faulty installation, misapplication, abrasion, corrosion, inadequate or improper maintenance, negligence, accident, tampering, or substitution of non-Graco component parts. Nor shall Graco be liable for malfunction, damage or wear caused by the incompatibility of Graco equipment with structures, accessories, equipment or materials not supplied by Graco, or the improper design, manufacture, installation, operation or maintenance of structures, accessories, equipment or materials not supplied by Graco.

This warranty is conditioned upon the prepaid return of the equipment claimed to be defective to an authorized Graco distributor for verification of the claimed defect. If the claimed defect is verified, Graco will repair or replace free of charge any defective parts. The equipment will be returned to the original purchaser transportation prepaid. If inspection of the equipment does not disclose any defect in material or workmanship, repairs will be made at a reasonable charge, which charges may include the costs of parts, labor, and transportation.

THIS WARRANTY IS EXCLUSIVE, AND IS IN LIEU OF ANY OTHER WARRANTIES, EXPRESS OR IMPLIED, INCLUDING BUT NOT LIMITED TO WARRANTY OF MERCHANTABILITY OR WARRANTY OF FITNESS FOR A PARTICULAR PURPOSE.

Graco's sole obligation and buyer's sole remedy for any breach of warranty shall be as set forth above. The buyer agrees that no other remedy (including, but not limited to, incidental or consequential damages for lost profits, lost sales, injury to person or property, or any other incidental or consequential loss) shall be available. Any action for breach of warranty must be brought within two (2) years of the date of sale.

Graco makes no warranty, and disclaims all implied warranties of merchantability and fitness for a particular purpose in connection with accessories, equipment, materials or components sold but not manufactured by Graco. These items sold, but not manufactured by Graco (such as electric motors, switches, hose, etc.), are subject to the warranty, if any, of their manufacturer. Graco will provide purchaser with reasonable assistance in making any claim for breach of these warranties.

In no event will Graco be liable for indirect, incidental, special or consequential damages resulting from Graco supplying equipment hereunder, or the furnishing, performance, or use of any products or other goods sold hereto, whether due to a breach of contract, breach of warranty, the negligence of Graco, or otherwise.

FOR GRACO CANADA CUSTOMERS

The parties acknowledge that they have required that the present document, as well as all documents, notices and legal proceedings entered into, given or instituted pursuant hereto or relating directly or indirectly hereto, be drawn up in English. Les parties reconnaissent avoir convenu que la rédaction du présente document sera en Anglais, ainsi que tous documents, avis et procédures judiciaires exécutés, donnés ou intentés à la suite de ou en rapport, directement ou indirectement, avec les procédures concernées.

Graco Information

For the latest information about Graco products, visit www.graco.com.

TO PLACE AN ORDER, contact your Graco distributor or call to identify the distributor closest to you:

Phone: 612-623-6921 or **Toll Free:** 1-800-328-0211 **Fax:** 612-378-3505

All written and visual data contained in this document reflects the latest product information available at the time of publication.

Graco reserves the right to make changes at any time without notice.

Original instructions. This manual contains English. MM 308547

Graco Headquarters: Minneapolis

International Offices: Belgium, China, Japan, Korea

GRACO INC. AND SUBSIDIARIES • P.O. BOX 1441 • MINNEAPOLIS MN 55440-1441 S USA

Copyright 1995, Graco Inc. All Graco manufacturing locations are registered to ISO 9001.

www.graco.com

Revision F, October 2017